

N3011 IR Dome Network Camera



5 Megapixel / H.264 / 1080P Real-Time / Vari-Focal / D-WDR / Auto-IRIS

- 5 Megapixel 1/3" CMOS Sensor in High Resolution
- H.264/MJPEG Dual Codec & Streaming simultaneously
- Auto-IRIS
- Vari-Focal Lens 3-10mm F1.3
- 3-Axis Mechanical Design for Ceiling Installation
- Up to QSXGA (2560x1920@15fps) / 1080P(1920x1080@30fps)
- Digital I/O for External Sensor and Alarm
- Mechanical ICR
- Digital Powerful WDR
- Built-in IR Illuminator
- 3D Noise Reduction
- 2 Way Audio Supported
- Intelligent Video Analytics (IVA^{PLUS})
- 3GPP Supported
- IP68 Water and Vandal Proof
- PoE Power Over Ethernet IEEE802.3af (Option)
- Micro SD Card Supported (SDHC up to 32GB)

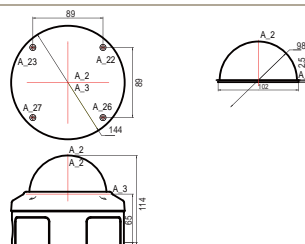


Specifications

Camera Sensor: 5 MegaPixel 1/3" CMOS sensor Scan Method: Progressive Lens: Vari-Focal Lens 3-10mm, F1.3 Number of Effective Pixel (H*V): 2560x1920 Minimum Illumination: 0.1Lux (F1.6, AGC max.) 0Lux (IR On) Horizontal Resolution: 1700TVL Wide Dynamic Range: High/Middle/Low, 3 steps selection Dynamic Range: 69db@8xGain SNR(max): 37db White Balance: Auto Gain Control: High/Middle/Low, 3 step selection Flicker Control: Off/50Hz/60Hz, 3 steps selection Electronic Shutter: Auto/Manual (1/30, 1/100, 1/500, 1/1000, 1/2000, 1/5000, 1/10000) Panning Coverage: -174°~ 174° Tilting Coverages: 0°~ 65° IRIS Control: Auto	
IR Illuminators Day and Night: IR-Cut Filter Removable (ICR) Wavelength Range: 850nm Distance: Up to 15M Beam Angle: 25°	
Video Video Compression: H.264 (MPEG-4Part 10/AVC)/MJPEG, Dual codec Video Frame Rate: 2560x1920@15fps/1920x1080@30fps Resolution: H.264 : 5M(2560x1920@15fps) 3M(2048x1536@15fps) 2M(1600x1200@15fps) 1080P(1920x1080@30fps) 720P(1280x720@30fps) MJPEG : 1.3M(1280x960@15fps) 1080P(1920x1080@15fps) 720P(1280x720@15fps) Bitrate control: CBR and VBR, 128kbps~10Mbps Multi-streams: Dual streaming, Multiple profiles 1920x1080 H.264@30fps/1280x720 H.264(Sub) @30fps/1920x1080 MJPEG@15fps 2560x1920 H.264@15fps/640x480 H.264(Sub) @15fps/1280x960 MJPEG@15fps Digital Zoom (PC side): 1/4X, 1/3X, 1/2X, 1X, 2X, 4X Image Rotation: Mirror, Flip, Rotate 180°	
Intelligent Video Analytics De-Noise/Motion Detection/Blind Detection/Privacy Mask Object Detection/Tracking, Tripwire Detection, Regional Entrance Detection, Abnormal Speed Detection, Reverse Direction Detection, Appearing/Disappearing Detection, Abandon Object Detection, Object Removal Detection, Loitering Detection, Events Counting	
Audio 2 Way Audio: Audio Line-in, Audio Line-out Compression: AMR, G.711 @ 64kbps, G.726 @ 32kbps/ Configure bit rate	
Network Streaming Protocols: RTSP/RTP/UDP, RTSP/RTP/TCP, RTSP/RTP/HTTP tunneling, LAN Multicast, Multipart-JPEG Supported Protocols: IPv4, IPv6, HTTP, UDP, TCP, ICMP, IGMP, ARP, DHCP, NTP, SMTP, FTP, SAMBA, UPnP, PPPoE, DNS, DDNS, RTSP, RTP, RTCP, ONVIF Yes 3GPP Mobile Surveillance	
Storage External: 1 x Micro SD Card (SDHC up to 32GB)	
Processors and Memory CPU: ARM9 SOC 800Hz Flash and Memory: 32MB ROM, 512MB DDRIII	
I/O and Connectors LAN: 1x RJ-45 Ethernet connector Audio: 1x Audio Line-in, 1x Audio Line-out Alarm I/O: 1x Alarm-in (2pin), 1x Alarm-out (3pin) Serial Port: RS485 (2pin)	
Software Compatibility Browser: Internet Explorer 6.0 or above Application Software: VMS Application Software OS supported: Microsoft Windows 2000, XP, Vista, Windows 7	
Open API CGI commands to control camera Media SDK to handle streaming	
Factory Default Button	
Power Power Input: DC 12V, DC12V/ POE Power Consumption: 7.8W/4.2W(IR off)	
Demension 144.3mm(Φ) x 115mm(H)	
Weight 880g	
Operating Environment Operating temperature: -20°C~ 50°C Storage temperature: -30°C~ 60°C Storage humidity: 0% ~ 95% Non-condensing	
Certification CE, FCC Class A, RoHS, IP68, IK10	
Warranty 24 months	

Member of

Dimension Diagram



Distributed by:

3S PocketNet Technology Inc.

7F., No.5, Lane 16, Sec. 2, Sichuan Rd. Banqiao Dist.,
 New Taipei City 22061, Taiwan (R.O.C.)
 Tel: +886.2.8967.2909
 Fax: +886.2.8967.2779